



MobileAsset

Quick Start Guide

© Copyright Wasp Barcode Technologies 2014

No part of this publication may be reproduced or transmitted in any form or by any means without the written permission of Wasp Barcode Technologies. The information contained in this document is subject to change without notice.

Wasp and the Wasp logo are registered trademarks of Wasp Barcode Technologies. All other trademarks or registered trademarks are the property of their respective owners.

CONGRATULATIONS

Congratulations on your purchase of MobileAsset! This guide will take you through the installation process and help you set up your software. Most of the information available here is also available in the Getting Started section of the online help.

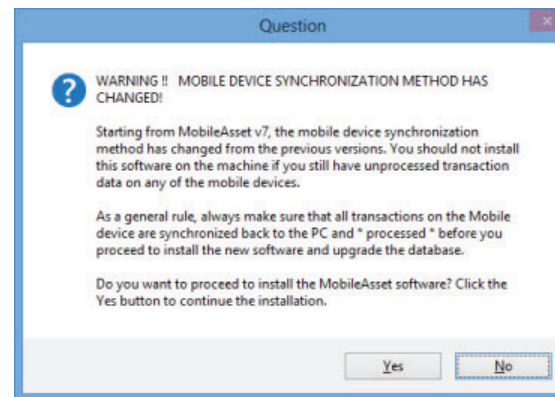
- INSTALL THE SOFTWARE2**
- SET UP YOUR DATABASE 15**
- METHODS OF DATA ENTRY18**
- MOBILEASSET WEB MODULE SETUP20**
- PRINT ASSET TAGS 22**
- AUDIT YOUR ASSETS 23**
- BEGIN USING THE APPLICATION 24**
- PROFESSIONAL EDITION INSTALL 24**
- CONNECTING A MOBILE DEVICE 28**
- ENTERPRISE EDITION INSTALL 29**
- UPGRADING ENTERPRISE 32**
- MANAGE MULTIPLE COMPANIES 33**
- CONNECTING A MOBILE DEVICE 35**
- MANUAL START PROCEDURES 36**

STEP 1

INSTALL THE SOFTWARE

1 Insert the installation disk into your computer. The CD should automatically run the MobileAsset installer. If the installer does not run, you can manually start it by navigating to the CD on your computer and selecting setup.exe.

The following question appears:



Beginning with MobileAsset v7, the mobile device synchronization method has changed to an “on demand” method. The new sync method allows you to sync automatically or manually over a wireless connection (or when the mobile device is physically attached to the computer, if you do not have wireless capability). This eliminates the needs to “process” data from the mobile device.

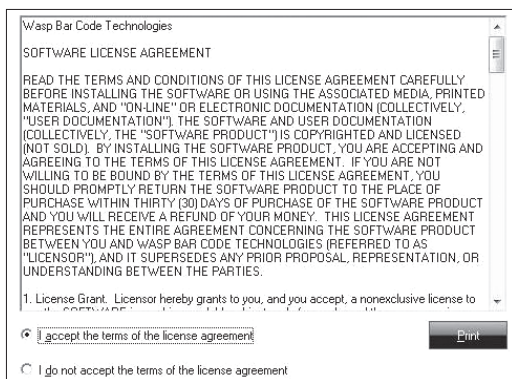
Click **Yes** on this screen if you are upgrading from a previous version and all of your devices have been synced and you are ready to install MobileAsset. Also click **Yes** on this screen if this is a new installation.

- 2 The installation wizard **Welcome** screen appears:



Click **Next** on this screen to begin installing MobileAsset.

- 3 Next the **License Agreement** screen appears.



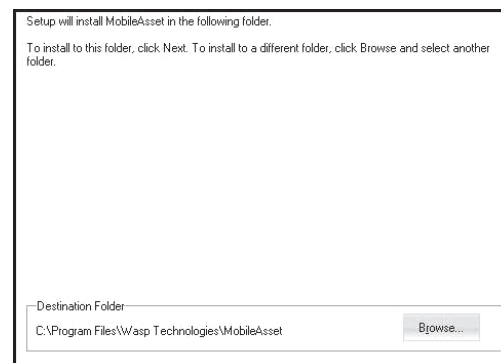
Review the license agreement, then select **I accept the terms of the license agreement**. You will not be able to continue installing the application until you select this option.

- 4 The **User Registration** screen appears.

User Name:	<input type="text"/>
Company Name:	<input type="text"/>
Serial Number:	<input type="text"/>

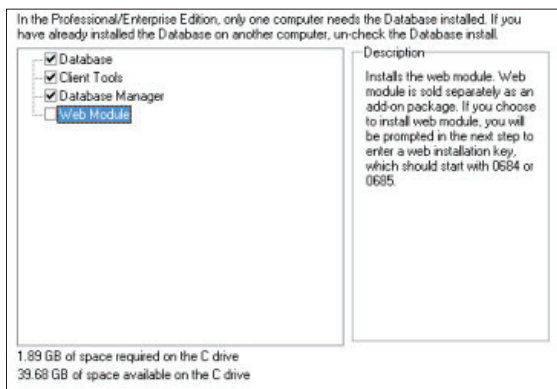
Enter your **User Name** (this can be any name of your choice), your **Company Name** and the **Serial Number**. The serial number can be found on or in the DVD case containing your MobileAsset software (19-digit number).

- 5 Next, a screen displays listing the **Destination Folder** for installation of MobileAsset: (C:\Program Files\Wasp Technologies\MobileAsset).



You can select a new destination by clicking the **Browse** button. Be aware that the install location must be two levels deep. For example, the path D:\Wasp Technologies\MobileAsset will work for the installation while the path D:\MobileAsset will cause the install to fail. Accept the default location (recommended) by clicking the **Next** button.

If you are installing the Professional version, this **Select Installation Type** screen appears:



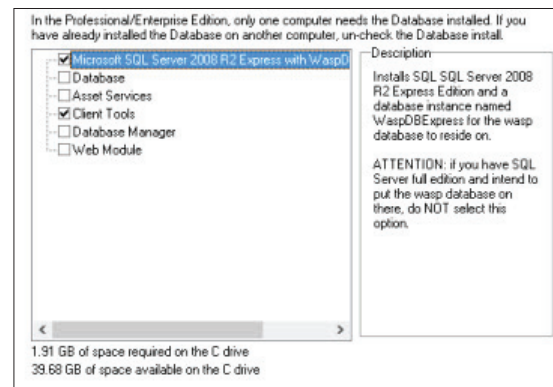
6 If you have already installed the database on another computer, deselect the **Database** checkbox on this screen (you only need to install the **Client Tools** to enable the software to talk to the database).

The **Database Manager** checkbox should be selected if:

- You are installing the Enterprise version and you will be maintaining assets for multiple companies from this machine, or
- You are installing the Professional or Enterprise version and you will be backing up, restoring or maintaining the database from this machine.

For information regarding the Database Manager feature please, refer to the section **Using MobileAsset to Manage Assets for Multiple Companies** on page 34.

If you are installing the Enterprise version, this Select Installation Type screen will also display the choice to install Microsoft SQL Server 2008 R2 Express with WaspDBExpress Instance.

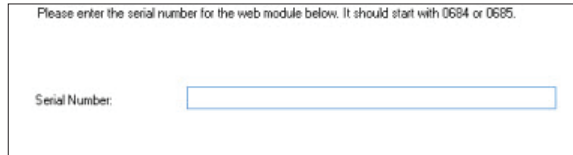


Note: Do not select the Microsoft SQL Server option if you have the full edition of SQL Server 2005/2008/2012 already installed and intend to install the Wasp Database in that location.

The **Web Module** is a separate option that can be purchased with the Professional and Enterprise editions. The Web Module checkbox should be selected if you have purchased a Web Module license. Only select the Web Module option if the machine on which you are installing has the 32-bit version of IIS already installed on it.

7 Web Module Installs Only. All others skip to Step 11.

If you have selected to install the **Web Module** you will see the following screen:



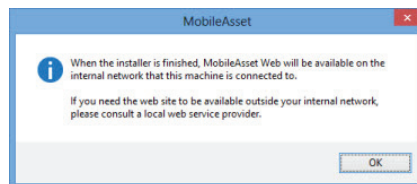
Please enter the serial number for the web module below. It should start with 0684 or 0685.

Serial Number:

Note: Web module installation information is being provided for legacy purposes only. Features new to MobileAsset version 7 will not be available in MobileAsset Web.

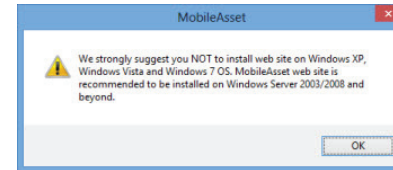
8 Enter the serial number for the web module, beginning with 0684 or 0685, then click Next.

A message will appear notifying you that MobileAsset Web will be installed and available on your internal network (the network to which the machine you are installing on is connected). You will need to contact your internet service provider if you need it available outside of your network.



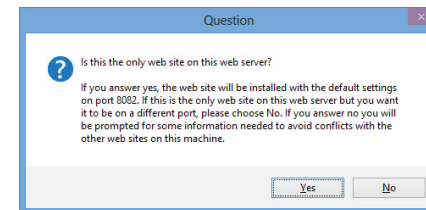
Click **OK** on this message to continue.

9 A message will appear advising you NOT to install MobileAsset Web on Windows XP, Windows Vista or Windows 7 OS. MobileAsset Web is recommended for installation on Windows Server 2003/2008 and beyond.

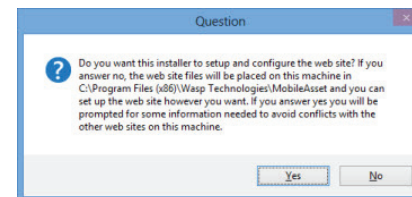


Click **OK** on this message to continue.

10 The following screen appears:

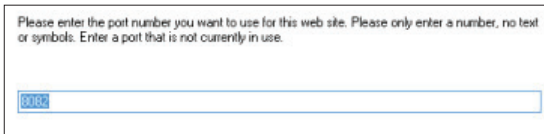


If MobileAsset will be the only website on the server, click **Yes**. The Web Module will install with the default settings using Port 8082. If there are other websites on the server, click **No**. You will need to provide additional information to avoid MobileAsset conflicting with your other websites. The following screen appears when you click **No**:



If you do not want the MobileAsset installer to configure the MobileAsset website for you, click **No**. All website files will be placed on the installation computer in C:\Program Files (86x)\Wasp Technologies\MobileAsset. You will need to access these files and configure the website.

If you want the MobileAsset installer to automatically configure the MobileAsset website to avoid conflicts with other websites on your server, click **Yes**. You will be asked to provide the port number for the website.



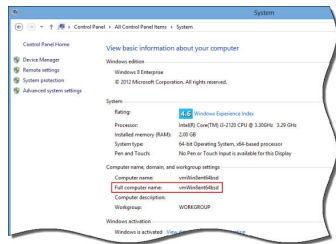
11 If this is a Pro or Enterprise version, the **Fully Qualified Domain Name** screen appears. The Fully Qualified Domain Name (FQDN) is the complete name of your machine.



Enter the complete domain name of this machine. The FQDN field may appear pre-populated with a machine name. You should verify that the machine name is correct using one of the methods described below:

Method 1:

Navigate to **Start > Control Panel (classic view) > System**. (in Win8 click **Control Panel > System**.) The FQDN for this computer is listed as the Full Computer Name.

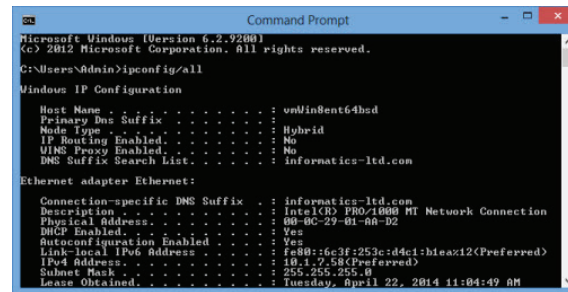


Method 2:

Select the **Start** (Windows icon) key on your keyboard, then enter CMD in the search field. CMD.exe will appear in the **Programs** section. (In Win8, select the CMD icon from the toolbar.)

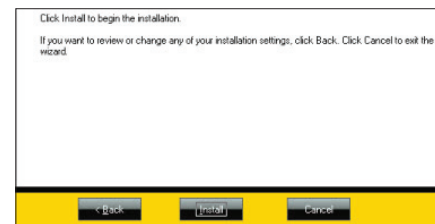
Select cmd.exe from the **Programs** section of the **Start** menu. The CMD screen appears.

On the CMD screen, enter **IPCONFIG/all** at the prompt. Configuration information for your machine will appear on the screen as shown below:



The **FQDN** is the **Host Name** followed by the **Primary DNS Suffix**. You may have to scroll up on the CMD screen to view these two fields.

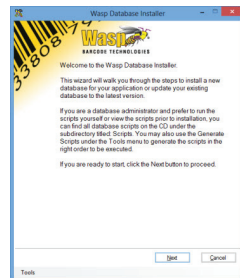
12 The installation confirmation screen appears. If you want to make changes to your destination folder at this point, click the **Back** button. If you are ready to install MobileAsset, click the **Install** button.



A series of progress screens will appear. The installation process may take a few minutes.

13 Database Installation

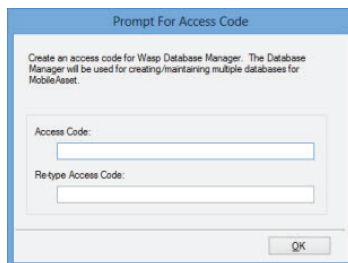
a. During the install, the screen shown to the right will appear: This wizard takes you through the process of installing your new database. Click **Next** on this screen to continue installing.



b. Next, a progress message appears notifying you that the software is testing the connection.

You do not need to do anything at this point.

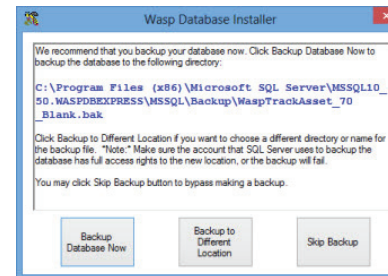
c. If you are installing the Professional or Enterprise version and you are installing the DB Manager, a screen appears asking you to create an access code for the Database Manager. This access code serves as your password to open the Database Manager after install. It is very important that you make a note of this password.



Enter the Access Code of your choice, then click the **OK** button.

If you are upgrading from version 5 or 6, the Database Installer will detect your existing database, upgrade it (leaving your existing data intact) and create a backup both before and after the upgrade.

d. A message appears asking if you want to backup the database now:



Click **Backup Database Now** to accept the default backup location, or click **Backup to Different Location** to select a custom directory or name for your backup file. If you want to create the backup later, click **Skip Backup**.

e. Click **Finish** on the Database Installer screen to continue.

f. The Database Installer will run again to install the **Sample Company Database**. You will be prompted to backup the database (screen shot above). The Sample Company database installation will begin with the screen shown in step a, above.

g. Click **Finish** on the Database Installer screen to continue.

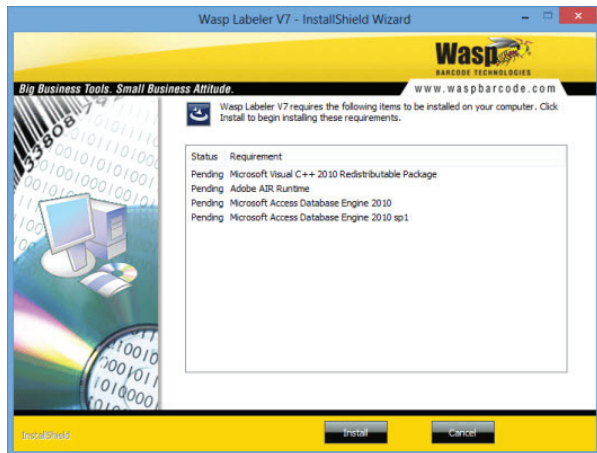
14 Next you will see a series of install screens for third party applications, such as Crystal Reports and Adobe Air. You do not need to do anything on these screens.

- 15 If you are installing the Web Module, the following screen appears:



Make a note of the MobileAsset Web Module URL.

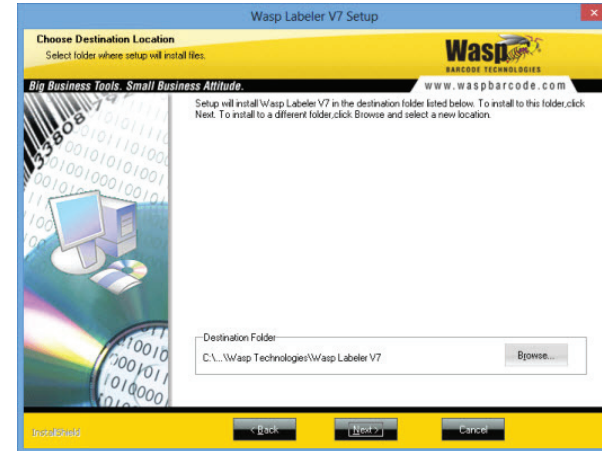
- 16 After MobileAsset installs, the **WaspLabeler installation** screen will appear. WaspLabeler installs to allow you to view and edit labels that are included in your MobileAsset system and to create new labels. This screen lists prerequisites that must be installed in order for WaspLabeler to work correctly.



Click **Install** on this screen.

Note: If you are upgrading the WaspLabeler program, select **Repair**, then **Next**.

- 17 The WaspLabeler **Choose Destination** screen will appear.



You can select a new destination by clicking the **Browse** button. Be aware that the install location must be two levels deep. For example, the path D:\Wasp Technologies\WaspLabeler will work for the installation while the path D:\SWaspLabeler will cause the install to fail. Accept the default location (recommended) by clicking the **Next** button.

A series of progress screens will appear as Labeler is installing. After the entire installation process is complete, a screen will appear asking if you want to reboot your computer. Select **Yes, I want to restart my computer now**, remove any installation disks from their drives, then click **Finish**. Your system will reboot.

MobileAsset and WaspLabeler icons will appear on your desktop.

STEP 2

SET UP YOUR DATABASE

Now that your software is installed, you will want to take a few minutes to properly enter information into your database.

For detailed information on any of the procedures listed in this document, please refer to MobileAsset's online help system. You can access the online help by clicking **Help > Contents** from the toolbar or by selecting the **Help** button on any screen.

Below is a brief outline of the steps required to set up your database. **These steps should be done in order.** The steps below discuss manually entering information into your database; however, much of this data can be imported. Importing data is discussed in this document in the section titled **Methods of Data Entry (Importing vs. Manual Entry)**. Even if you are planning on importing your information, we recommend that you review the steps below to help you understand how the different types of data interrelate.

If you have installed the MobileAsset Web Module, you can complete most of your database setup on the Web. You will need to enter your Groups/Users and Company Information on the PC application, then you can complete the database setup on the Web Module. For more information on getting started using the MobileAsset Web Module, please refer to the section titled MobileAsset Web Setup on page 19.

1 First, open the MobileAsset application by double-clicking on the icon on your desktop. You can also access MobileAsset from the Start menu by selecting **Programs>Wasp Technologies>MobileAsset**.

The **Login** screen will appear. The first time you access the system, Admin will appear in the **User Name** field. You do not need to enter a password. Click the **OK** button to launch the software.

2 Create at least one additional user with Administration privileges. By default, MobileAsset contains one Admin user profile. You will want to create at least one more so that if one becomes disabled you can still access the system.

Let MobileAsset Automatically Create User Profiles Using Windows NT Authentication: If you are using Windows NT Authentication, you can set up a group in MobileAsset that matches your group name in the Microsoft Active Directory. When users in this group access MobileAsset for the first time their User account will be automatically created and added to the Manage Users screen in MobileAsset (PC application).

Example: You have a group in your Active Directory named My Users and you want everyone in My Users to have access to the MobileAsset Web Module. Create a group with the name My Users in MobileAsset using the MobileAsset PC application. Now when each member of the Group My Users accesses MobileAsset, they will receive the usual Windows Network Login Screen. They should enter their normal network user name and password. MobileAsset will recognize the Active Directory group's name as matching the MobileAsset group name and automatically create a user account for that user. You can then view those user accounts in MobileAsset (Security > Manage Users). Keep in mind that if you change the password on the user's MobileAsset user's account, they will receive the regular login screen and must enter the new password, rather than their network password.

3 Enter your company information. From the **Main** menu, select the **Administration** icon, then click **Company Information**. All fields on the company information screen are optional.

4 Enter all sites for your company. From the **Main** menu, select the **New** icon, then click **Site**.

A site is a major classification for areas that contain assets within your company. For instance, if you have two warehouses, you might set up MobileAsset to have two sites: Warehouse 1 and Warehouse 2.

You must enter at least one site and location before you can add assets to your system.

5 Now you can enter the locations contained in each of your sites. From the **Main** menu, select the **New** icon, then click **Location**. Assets that you enter into your system must each be assigned to a site and a location within that site. Using the example above, within Warehouse 1, you might have three locations: Main Storage Area, Manager's Office and Administrative Office.

6 This step is optional. You can create departments for your company. This may help you with assigning the assets. For instance, within your locations, you may want to designate two departments. Continuing the example above, within the Administrative Office, you could have two departments: Accounting and Human Resources. This is a further classification to help you track your assets.

To set up departments, from the **Main** menu, select the **New** icon, then click **Departments**.

7 This step is optional. You can enter all manufacturers for your assets. From the **Main** menu, select the **New** icon, then click **Manufacturers**. Manufacturers can later be assigned to Asset Types (see step 9).

8 If you will be calculating depreciation on your assets, set up your Depreciation Classes next. These are created to determine a specific Depreciation Method (straight-line, double declining, etc.) for an Asset type (see step 9). The Asset Types are then assigned to specific assets and the depreciation class tied to the asset type is used to calculate depreciation.

To create Depreciation Classes, from the **Main** menu, click the **New** icon, then select **Depreciation Classes**.

9 Now you need to create your asset types. Asset types are required because each asset in your inventory is assigned to an asset type. The asset type is a category or classification for assets. For instance,

you may have an asset type of IBM Laptop X6000 that defines the manufacturer, size specs, etc. of this particular type of computer. Then specific computers of the same type are assigned as assets to the IBM Laptop X6000 asset type.

To create Asset Types, from the **Main** menu, select the **New** icon, then click **Asset Types**.

10 This step is optional. You can create different categories to which you can assign assets. This is another way to further define your assets. You can add categories directly from the **New Asset Type** screen, if you wish.

Now you are ready to begin entering individual assets. From the **Main** menu, click the **New** icon, then click **Assets**.

Methods of Data Entry (Importing vs. Manual Entry):

There are two ways you can add information to your database: through manual entry or by importing the data from an existing database. Importing data can be much quicker if you wish to transfer a large amount of information from an existing database to MobileAsset. Importing this information also ensures you do not have typographical errors.

You must import the data in a set order. *Detailed instructions for importing data can be found in the online help.* The outline below details the order in which data must be imported into the system. For a more detailed explanation and outline, please refer to the Import Strategies topic in the online help. MobileAsset will only accept the data in this specific order because each piece of information builds on the next to create a complete profile for your assets. For instance, each asset must be assigned to a specific location, therefore, you must import your locations first so that MobileAsset will have this information prior to importing your assets. Again, we strongly recommend that you review the information regarding importing data in the online help before you begin the import process.

Import Order:

- A. Vendors (optional)
- B. Manufacturers (optional)
- C. Depreciation Classes
(optional – import if you will be calculating depreciation.)
- D. Asset Types (required)
- E. Departments (optional – if you will be importing employees and wish to assign them to specific departments, you must import the departments prior to importing the employees. If you wish to assign Assets to specific departments, but not employees, you can import departments anytime before importing assets.)
- F. Site (required)
- G. Locations (required)
- H. Assets (required)
- I. Employees (optional – import if you will be checking out/in assets to employees)
- J. Customers (optional - import if you will be checking out/in assets to customers)

If you plan on importing information, you should also keep in mind that some types of supplemental information cannot be imported. For instance, if you wish to assign Asset Types to specific Categories, you will need to manually create these from the New Asset Type screen.

Imported data must be in .csv format. For further information, including examples of properly formatted .csv files, please refer to the Import Strategies topic in the online help.

MobileAsset Web Module Setup

This information is being provided for legacy purposes only. New features available in MobileAsset version 7 will not be available in MobileAsset Web. The MobileAsset Web Module combines the asset tracking tools found in the PC version with the accessibility and convenience of a web-based application. The web module utilizes the same database your PC version does, so if you make changes to your assets on the PC, your users will see those changes in the Web Module, and vice-versa. While the Web Module is ready to use right after installation, there are a few things to keep in mind as you get started.

Accessing the Web Module – After installation you should be able to access the web module by typing `http://<webservername>:8082/`. If you do not have Microsoft Silverlight installed, you may see a screen prompting you to install it.

Follow the onscreen prompts to install Microsoft Silverlight. You will need to close and reopen your browser. Silverlight will need to be installed on each client machine that will be accessing the MobileAsset Web Module. You will need Local Admin rights to each machine in order to install Silverlight. Your IT department may be able to perform this installation for you through update services.

Setting Your Internet Options for Maximum Performance - After you open MobileAsset in your web browser, you should take a few minutes to make sure your Internet options are set to allow maximum performance. It is a good idea to perform the following steps prior to using the web module. Note: These setting instructions are for Internet Explorer.

- **Add MobileAsset to your list of “Safe Sites”** – To do this, in your browser go to **Tools > Internet Options > Security > Local Intranet > Sites**. Add the web address of your MobileAsset Web Module.
- **Check the User Authentication settings on your browser** – If your company will be using Windows NT Authentication (see the Security section, below) to log users onto the web module, you

can prevent them from seeing the Windows Network Login screen each time they login. Go to **Tools > Internet Options > Security > Location Intranet > Custom levels**. The **Security Settings** screen appears. On the **Security Settings** screen scroll to the bottom. In the **User Authentication** section, make sure **Automatic Logon with Current User Name and Password** is selected. When this option is selected, and your groups/users in the MobileAsset PC application match those in your Microsoft Active Directory, users are automatically logged into the MobileAsset Web Module without having to enter their network login/password. Note: The settings below are from Internet Explorer.

- **Check your Active X settings** – The Active X components are used for printing reports from MobileAsset. Make sure all Active X components are set to **Enable** or **Prompt**. These are found under **Tools > Internet Options > Security > Local Intranet > Custom levels**.
- **Make sure popups are set to open in a new window or tab** – On the **Internet Options** screen – **General** tab, click on **Tabs-Settings**. On the **Tabbed Browsing Settings** screen make sure the options **Always open popups in a new window or tab** is selected.
- **Set your Popup Blocker to Always Allow Popups From This Site** – If you have the popup blocker turned on, the first time you use the web module you may see a message that a popup window has been blocked. Select **Always Allow Popups From This Site** to prevent this from happening.

For more detailed instructions, with screen shots, on completing the steps above, or if you have problems printing from MobileAsset, please see the Troubleshooting section found in the MobileAsset Online Help. To access the online help, open the web module and click **Help** from any screen.

Security – Groups and users are set up in the MobileAsset PC application. If you need to make corrections/additions to your users or groups, you will need to do so on the PC. There are two ways you can set up users in the MobileAsset PC application to have access to the MobileAsset Web Module:

1. Manually Enter Users: Create groups and users using the MobileAsset PC application.

2. Let MobileAsset Automatically Create User Profiles Using Windows NT Authentication: If you are using Windows NT Authentication, you can set up a group in MobileAsset that matches your group name in the Microsoft Active Directory. When users in this group access MobileAsset for the first time their User account will be automatically created and added to the Manage Users screen in MobileAsset (PC application).

Example: You have a group in your Active Directory named My Users and you want everyone in My Users to have access to the MobileAsset Web Module. Create a group with the name My Users in MobileAsset using the MobileAsset PC application. Now when each member of the Group My Users accesses MobileAsset, they will receive the usual Windows Network Login Screen. They should enter their normal network user name and password. MobileAsset will recognize the Active Directory group's name as matching the MobileAsset group name and automatically create a user account for that user. You can then view those user accounts in MobileAsset (Security > Manage Users). Keep in mind that if you change the password on the user's MobileAsset user's account, they will receive the regular login screen and must enter the new password, rather than their network password.

Getting Additional Help – If you need assistance setting up the MobileAsset Web Module, you can refer to the Troubleshooting section in the online help, or you can check the Troubleshooting the MobileAsset Web Module page at the support site. The online troubleshooting page is an update repository of tips for getting the most out of your web application.

STEP 4

PRINT ASSET TAGS

Asset tags should be printed and attached to each asset in your database. When you created your assets, remember that you entered a number or code for each asset in the Asset Tag field of the New Asset screen (if

you manually entered your assets) or in the Asset Tag column (if you imported the data). Now an actual tag should be printed that contains the Asset Tag number or code and (usually) a barcode for quick identification and tracking. These tags should be affixed to each asset.

MobileAsset came bundled with the WaspLabeler application making the creation of these asset tags simple. WaspLabeler was installed when you installed MobileAsset. To print tags, first select the assets from the Asset List for which you want to print tags, then click the Print Tags icon on the Asset List toolbar. You can select multiple assets using the SHIFT or ALT keys.

STEP 4

AUDIT YOUR ASSETS

Note: Test your mobile device to make sure data travels back and forth correctly before starting to do actual work on the device.

Now that your database is set up and you have attached asset tags to all assets, you should audit your assets. This ensures you have not missed an asset, mis-labeled an asset, or assigned an asset to the wrong location. The quickest way to do this is to use your mobile device. You will need to set up your mobile device prior to performing this step. Please refer to the Working With Mobile Devices section of your online help system for assistance setting up, using and syncing your mobile devices.

Synchronize the data you have collected on your mobile device back to the PC. If you have chosen not to install a mobile device, you will need to do this audit manually, by physically checking each asset tag attached to an asset and comparing against the database.

STEP 5

BEGIN MANAGING YOUR ASSETS

You have now successfully set up MobileAsset. You can now use MobileAsset's powerful tools, including detailed reports, check-in/out features and list views to quickly keep track of and manage your assets.

FOR PROFESSIONAL EDITION INSTALLATION

MobileAsset Pro Edition takes advantage of your existing TCP/IP network to allow up to five MobileAsset client workstations access to a single database located at the MobileAsset server. The client software may optionally be installed on the same machine where the MobileAsset server database is installed.

Installation

MobileAsset Pro ships with one server license and five client licenses. MobileAsset Pro Edition may be installed in your choice of these two configurations.

Refer to the diagrams and hardware requirements below to decide how you will deploy the licenses in your environment.

Minimum Server Configuration	Recommended Server Configuration
750 MHz or faster processor	2.0+ GHz
2 GB of RAM	16 GB of RAM
60 GB of disk space	100 GB of disk space
DVD drive (for installation only)	
32-bit or 64 bit version of: Windows 8, Windows 7 Professional, Windows Server 2003, 2008, or 2012 (recommended)	

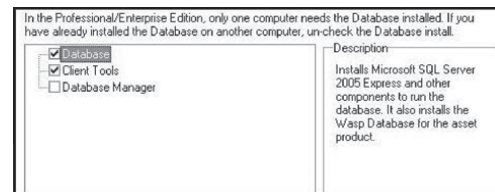
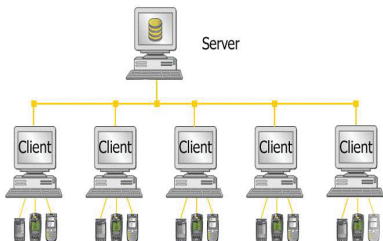
Minimum Client Configuration	Recommended Client Configuration
750 MHz or faster processor	2.0+ GHz
1 GB of RAM	4 GB of RAM
10 GB of disk space	60 GB of disk space
DVD drive (for installation only)	
1024 x 768 pixel display, 256 colors minimum	
32-bit or 64 bit version of: Windows 8, Windows 7 Professional, Windows Server 2003, 2008, or 2012 (recommended)	

NOTE:

- MobileAsset server installation on Microsoft® Windows® 2000, 98SE, NT or ME machines are not supported.
- MobileAsset clients will not work without connecting to a running MobileAsset server.
- The database server will run automatically every time the computer is rebooted.

1 Server and 5 Clients

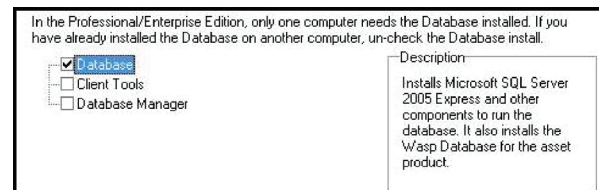
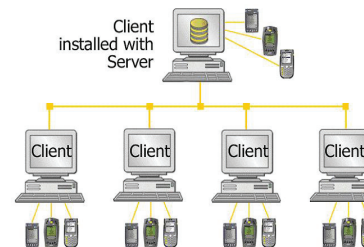
When selecting the MobileAsset database server configuration shown below, uncheck the **Client Tools** option on the **Select Installation Type** screen, and only the database server will be installed on this machine.



For the client-only machine, refer to the **Client Only** section below.

2 Server with Client and 4 Clients

When selecting the MobileAsset database server configuration shown below, leave the check in the **Client Tools** option and the **Database** option. The database server and one client will be installed on this machine.

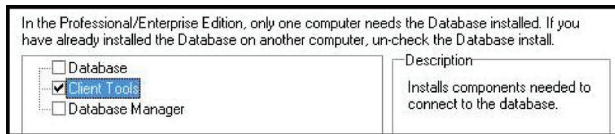


Remember that there are only five client licenses, so you might want to deselect the **Client Tools** component if you would rather deploy all of your client licenses on machines other than this database server machine. If you deselect **Database** here, you will not be installing the server.

3 Client Only

The **Client Tools** component of MobileAsset Pro Edition can be installed once a MobileAsset server has been installed and is running.

Deselect the **Database** (Server) component when the **Select Installation Type** screen is presented, and click the **Next** button to install only the **Client Tools** component at machines other than the database server machine.



Note: For information regarding the Database Manager option, please refer to the section **Using MobileAsset to Manage Assets for Multiple Companies** on page 32.

The **Computer Name** screen is displayed once the database server install is complete.

Important:

Record your **Computer Name** before clicking the **OK** button. This name must be known when you perform your Client Tools installation.

USING THE MOBILEASSET CLIENTS

The client licenses are “Fixed”. After you install a client license and run that client, it will connect to the server and register itself with the server. Information about that computer will be stored on the server. Any authorized user can connect from that computer using that one license. If five clients have been installed and registered with the server and a sixth client is installed, when that sixth client runs it will fail to connect because all licenses have been used. Even if none of the other clients are running the application, the sixth machine will be denied a license.

Functions you perform at any MobileAsset PC client machine will impact other users at one of three possible levels, as illustrated in the following table:

Function Performed on a Client	Affects All Users, Everywhere	Affects Any User Who Logs On to this Client	Affects Only a Specific User
Change Company Information	X		
Restore the database	X		
Add or change Security Privileges		X	
Import Data	X		
Edit Field Names	X		
Set Default Working Site			X
Change any Option	X		
All Asset Management functions	X		
Change Labeler Labels		X	
Change Report Filters	X		
Mobile Device Database Filter Criteria			X

CONNECTING A MOBILE DEVICE

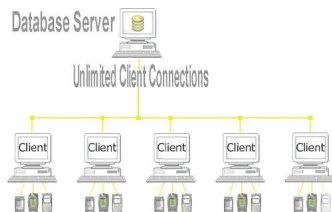
One or more compatible mobile devices may be connected anywhere the MobileAsset Client Tools are installed. You will have unlimited licenses to connect Wasp Devices. Additional licenses for use with non-Wasp devices, such as iPhones/iPads or Android phones/tablets, are available for purchase. Use the Quick Start Guide with the device to set up the hardware and refer to the Working with Mobile Devices section in the MobileAsset online help. To access the online help, from the MobileAsset software on your PC, select Help > Contents or click Help from any MobileAsset screen.

FOR ENTERPRISE EDITION INSTALLATION

MobileAsset Enterprise Edition takes advantage of your existing TCP/IP network and your current installation of MS SQL Server to allow an unlimited number of client workstations to access the MobileAsset database. The client software may optionally be installed on the same machine where the database is installed.

INSTALLATION

MobileAsset Enterprise ships with one server license and the ability to connect an unlimited number of clients connections:



Refer to the diagram above and the hardware requirements below to decide how you will deploy MobileAsset Enterprise in your environment.

Minimum Server Configuration	Recommended Server Configuration
750 MHz or faster processor	2.0+ GHz
2 GB of RAM	16 GB of RAM
60 GB of disk space	100 GB of disk space
DVD drive (for installation only)	
32-bit or 64 bit version of: Windows 8, Windows 7 Professional, Windows Server 2003, 2008, or 2012 (recommended)	

Minimum Client Configuration	Recommended Client Configuration
750 MHz or faster processor	2.0+ GHz
1 GB of RAM	4 GB of RAM
10 GB of disk space	60 GB of disk space
DVD drive (for installation only)	
1024 x 768 pixel display, 256 colors minimum	
32-bit or 64 bit version of: Windows 8, Windows 7 Professional, Windows Server 2003, 2008, or 2012 (recommended)	

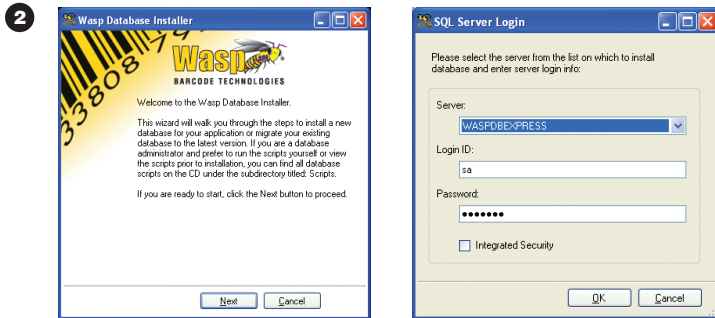
NOTE:

- MobileAsset server installation on Microsoft® Windows® 2000, 98SE, NT or ME machines are not supported.
- MobileAsset clients will not work without connecting to a running MobileAsset server.
- The database server will run automatically every time the computer is rebooted.

Server Installation Procedures:

NOTE: Please ensure that the Database Administrator performs the following procedures.

- 1 Place the CD into the CD ROM drive on your server. Run the installer as usual. MobileAsset supports **Microsoft SQL Server 2005/2008/2012 Full Version**. If the server does not have SQL installed, you can select to install the MS SQL Server that comes with MobileAsset (SQL Server 2008 R2 Express) on the **Installation Type** screen along with the database. This configuration is available for 5 clients only. If you already have it installed, select **Database Only** on the **Installation Type** screen.



If you have more than one database instance installed, they will be listed under the server.

NOTE: The **Integrated Security** check box is used to specify that the SQL Server Wire Protocol driver request a secure (or trusted) connection to SQL Server. SQL Server uses integrated login security to establish connections using this data source, regardless of the current login security mode at the server. Any login ID or password supplied is ignored. The SQL Server system administrator must have associated your Windows network ID with a SQL Server login ID.

When the **Integrated Security** check box is not checked you must specify that SQL Server use standard login security to establish connections using this data source. You must specify a **Login ID** and **Password** for all connection requests.

Make sure that you select the correct database instance in the server list to install MobileAsset database.

- 3 Click **OK**.
- 4 The same Wasp Database Installer windows will appear that display in step 10 of the **Install the Software** section of this document (page 9).

Note: For information regarding the Database Manager feature, please refer to the section **Using MobileAsset to Manage Assets for Multiple Companies** on page 34.

If the database has been previously installed, the installer will upgrade the database to the latest layout.

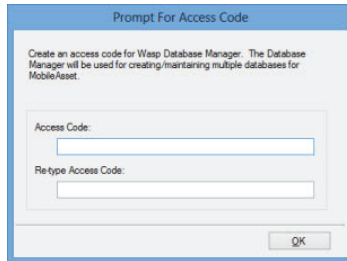
Now the server database installation is complete. If you have Microsoft SQL Enterprise Manager, you will see that WaspTrackAsset (for MobileAsset) has been installed under the **Server** and the **Instance** (if applicable) that you specified.

UPGRADING FROM MOBILEASSET ENTERPRISE VERSION 5 OR 6 TO VERSION 7

- 1 The MobileAsset Installer should be run on each client machine to upgrade the software.
- 2 On the database server machine that houses your database, you should run the installer as usual. On the **Select Installation Type** screen, select **Database** only.

If the machine that houses your database also contains a client program, you will need to perform Step 1 and Step 2 on that machine.

Note on Running Scripts Manually: If you run the scripts manually to install the database and you need multiple company access, the access code for the Database Manager will not be set the first time you run the Database Manager. To correct this, you must run the Database Manager at least once to create the access code rather than leaving it blank. You will be presented with the same Create Access Code screen that would have appeared during a normal install:



Leaving the access code blank may lower your database security level and put your information in greater danger of being compromised.

USING MOBILEASSET TO MANAGE ASSETS FOR MULTIPLE COMPANIES

The Enterprise version of MobileAsset allows you to create databases for multiple companies. This means that if you have two separate entities for which you want to maintain assets, you can install one instance of MobileAsset, then create two databases - one for each company. Remember that a database is the repository for all information about your company. Everything from your company's name and address, to employee and asset information is stored in the database. If you need to track asset information for two separate companies, you wouldn't want to group that information into one database, as it would be impossible to know to which company the asset belongs. Creating a database for each company allows you to enter sites, locations, customers, employees, assets, etc. that are specific to one company. In addition, each company has its own security, so you can control who has access to a specific company.

The initial installation of MobileAsset creates one company for you to use. To add more companies, you will need to use the Database Manager. The Database Manager is a program that can be installed during the MobileAsset installation. If you did not install it when you installed MobileAsset, you will need to run the MobileAsset installer again and select **Database Manager** on the **Select Installation Type** screen (Step 7 in the Install the Software section of this document). Leave the other check boxes on this screen checked as they were for the initial install. During the installation, you will be prompted to create an access code. Make a note of the code you create, as you will need this to access the Database Manager later. The Database Manager can be installed on any machine, even if it has no other pieces of MobileAsset installed on it. It does not consume a license if it is installed on a machine that does not have the client on it.

To run the Database Manager, click **Start > All Programs > Wasp > MobileAsset > Database Manager**. Again, you will need to know the access code you created during the installation to run the Database Manager. Use the Online Help built into the Database Manager to learn how to add and manage database (click the Help button or press F1 on your keyboard when the Database Manager is running).

After multiple company databases are created using the Database Manager, you can use the same MobileAsset icon that was created during installation, or the MobileAsset Web Module, to access any of the companies. Double click on the icon and enter your login name and password. If the entered login and password match a login and password set up in more than one company database, a screen will appear allowing you to select which company you want to access.

CONNECTING A MOBILE DEVICE

One or more compatible mobile devices may be connected anywhere the MobileAsset Client is installed. You will have unlimited licenses to connect Wasp Devices. If you purchased the Professional or Enterprise Editions, additional licenses for use with non-Wasp devices, such as iPhones/iPads or Android phones/tables, are available for purchase.

In the Professional and Enterprise Editions, you will be able to perform transactions on the mobile device and wirelessly transmit them back to the PC in near real time using Wasp's new SyncAnywhere feature. The Standard Edition requires you to physically connect the device to the PC to transmit data back and forth.

Use the Quick Start Guide with the device to set up the hardware and refer to the Working with Mobile Devices section in the MobileAsset online help for information on downloading and installing MobileAsset on your device. To access the online help, from the MobileAsset software on your PC, select Help > Contents or click Help from any MobileAsset screen.

MANUAL START PROCEDURES

- 1 Place the CD into the CD ROM drive on your computer.
- 2 In Windows 7, right click on the **Start** icon and click the **Open Windows Explorer** option. In Windows 8, click on the folder icon on the toolbar.
- 3 Click on the disk drive location containing your Installation CD to expose the CD contents.
- 4 Locate the **setup.exe** program and double click on it. The installation process will begin.

